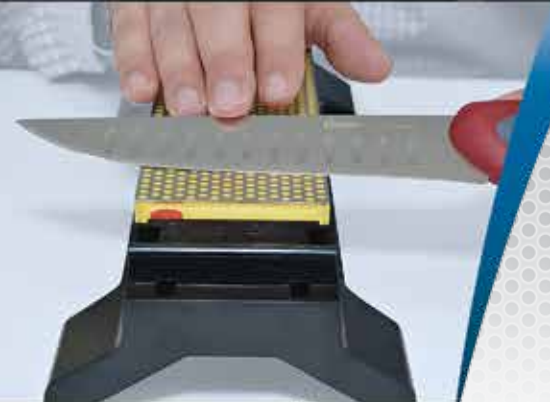


CALL FOR CURRENT PRICING

(800) 562-0900



THE LEADER IN DIAMOND SHARPENING™

INFO@SWIFTTOOL.COM

WWW.SWIFTTOOL.COM

Thank you for making a commitment to sharpening with DMT® products.

To All Who Share Our Zeal for Sharpening

We understand that when you purchase a world-class diamond sharpener you expect your investment to provide many years of reliable performance, but at DMT® we're looking to exceed that expectation. We want to develop a long-standing relationship with you—a partnership for a lifetime of sharpening excellence. In order for this to happen, we have to make sure that you achieve the best possible results from day one, and enjoy continued success as you expand your sharpening needs. That's why, as an industry leader, we are set up to do more than just help you choose the right sharpener for every job; we provide ongoing education, tutorials, video demonstrations and more. Just go on line any time, or call us during business hours to speak with a real person. That's right, a *real* person, because we're always happy to talk with you about sharpening!

The Innovations Never Stop

Sharpening technology has been around since the Bronze Age, so one might think that by now there's not much left to improve. And yet for DMT®, the innovations just keep coming. In 1976, we introduced the first interrupted diamond sharpening surface—the signature polka-dot design that ensures cleaner, more efficient sharpening. From there we innovated our best-selling Diafold® sharpener, followed by the high-tech DuoSharp® line, then the Diamond Wave™ and our patented Magna-Guide® sharpening system. Now, we're proud to introduce our latest inspiration.

The Latest Innovation from DMT®: **HardCoat™**

Diamond stones make quick work of steel and ceramic edges alike. The DMT® HardCoat™ surface is a unique diamond surface especially suited for the rigors of sharpening ceramic edges. Originally introduced on our DiaFlat® Lapping Plate for flattening traditional bench stones, the HardCoat™ surface proved so durable we expanded its application to 3 of our most versatile and popular models. These premium sharpeners will produce excellent, consistent results time after time, year after year.



Striving to Build upon Our Winning Reputation

Made in the USA and recognized internationally, our products have earned accolades for excellence in design, innovation, and quality. Among them are the *International Spark Design Award™*, the *International Practical World Exhibition Prize*, the *Blade Magazine Accessory of the Year Trophy*, the *HANDY Magazine Innovation Award*, packaging awards from the *National Retail Hardware Association* and more. We take pride in these industry honors, and work hard to earn them, over and over again, through dedication to our customer's needs.

Please take a look at our complete line of superior sharpening products, and contact us any time by phone or email, or visit us on the web at www.dmtsharp.com

Diamond abrasives provide the fastest, easiest and most effective way to sharpen an edge. Unrivalled in both performance and durability, DMT® brand sharpeners have earned the reputation as the best sharpening products on the planet.

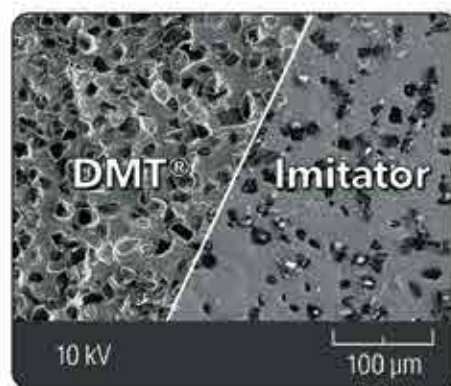
The DMT® Difference

Since 1976, DMT® has been in business to do just one thing: make the world's best diamond sharpeners. Product innovations with our signature polka-dot interrupted surface, as well as our continuous surface of high-performance diamond, are praised worldwide for their superior quality. From pocket-sized whetstones to heavy-duty bench stones, the DMT® Difference shows time and again through our undivided pursuit of sharpening excellence.

Quality Must Be Manufactured, Not Fabricated

Diamond Coverage differs widely from one manufacturer to the next. For long-lasting performance, DMT® makes certain that each sharpening surface carries the most diamonds per square inch in the industry.

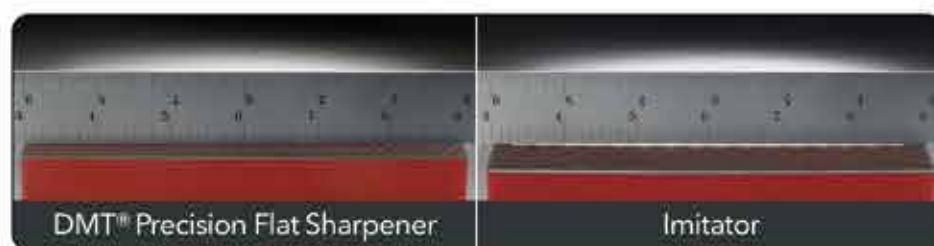
Diamond Uniformity is also key to sharpener performance. DMT® uses a proprietary process that ensures near-perfect consistency in grit size. The result is a micronized monocrystalline diamond that covers evenly across the sharpening surface to prove effective with every use, year after year.



Always look for the DMT® logo to be sure you're buying the genuine DMT® diamond surface.

◀ Beware of imitators!

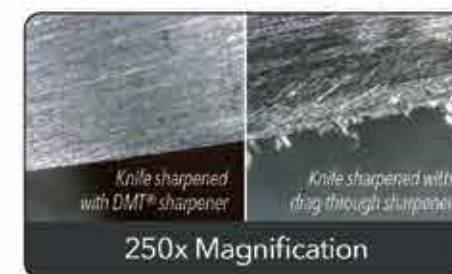
The DMT® sharpening surface (left) exhibits full coverage and the diamonds show striking consistency in size to ensure peak performance and durability. The copycat surface (right) carries a sparse, patchy coating made from a jumble of different sized diamonds.



Surface Flatness can mean the difference between a well-honed tool and one that is barely serviceable. Flat surfaces maintain consistent, even contact with the edge to produce a bevel that carries the same degree of sharpness from end to end. DMT® sharpeners are engineered to be the flattest on the market, and built to outlast other products, which are variable in surface, and often warped, hollowed or grooved.

▲ DMT® gives it to you straight.

Like all DMT® sharpeners, the Diamond Whetstone™ (left) proves flat every time. When tested against a precision straight edge, no light appears between the sharpening surface and straight edge. The copycat whetstone (right) may look similar to a Diamond Whetstone™, but when tested for flatness the difference is obvious. The light shines through to reveal a surface that fails to prove flat.



▲ DMT® vs. Drag-through

An edge created by a DMT® sharpener (left) is far superior to one made by a typical drag-through sharpener (right). The DMT® diamond surface produces a clean, razor-sharp edge while the drag-through sharpener leaves a trail of metal burrs that quickly bend and flake off with use.

Start Experiencing the Difference Today

When compared under every condition related to diamond quality and sharpener performance, it becomes clear that DMT® products truly have no competition. Proving more than just the best way to produce a first-rate edge, our sharpeners save you from coping with an entire toolbox of second-rate ones. That's why you owe it to yourself, and your tools, to choose nothing less than a DMT® diamond sharpener.

Which grit should I use?

This very good question is exactly why we pioneered the color-coding system for the sharpening industry. Colors provide quick and consistent identification, plus they help emphasize just how easy it can be to make the right choice. Grit selection should be based on just three factors: (1) the type of tool to be sharpened, (2) the condition of its edge, and (3) your desired level of sharpness. For professional results, choose at least two grits so you can step from the coarser to finer surfaces as you sharpen. Or choose a Double-Sided Diafold® or DuoSharp® sharpener, which have two sides to give you a pair of grits in every product. Whichever your preference, the chart to the right will help you select the optimal grits.

If you're still not sure, just call Customer Service at 800-666-4368 or 508-481-5944 during regular business hours, Monday through Friday, 8:00 a.m. to 5:00 p.m. EST.



● **Extra Extra Coarse** | Aggressive edge repair when bringing a tool back from what looks like the end of life—a safe alternative to powered grinding. Recommended for extreme stock removal to repair a much damaged edge or to quickly change a bevel angle. This grit is a safe alternative to power grinding, cutting quickly without heat build-up that can ruin tool temper. Unless the stone is designated "Diaflat" (that is, designed for flattening other stones), DMT does not recommend using for flattening waterstones, Arkansas stones, and synthetic stones. Size: 120 micron (120 mesh). Color code: silver.

● **Extra Coarse** | Use to rapidly repair damaged or real rough edge. Recommended for aggressive removal of metal on damaged tools or for heavy-duty outdoor tools such as axes and lawn mower blades. This grit is commonly used as the first step in flattening the backs of chisels and plane irons and for rapid stock removal from a chipped or damaged edge. Unless the stone is designated "Diaflat" (that is, designed for flattening other stones), DMT does not recommend using for flattening Japanese waterstones. Size: 60 micron (220 mesh). Color code: black.

● **Coarse** | Transforms a dull edge to cutting condition. Quickly restores a dull edge to cutting sharp. Customers that desire cutting fast action without worry of edge refinement often use our coarse models. Unless the stone is designated "Diaflat" (that is, designed for flattening other stones), DMT does not recommend using for flattening Japanese waterstones. Size: 45 micron (325 mesh). Color code: blue.

● **Fine** | Use to put a great edge on slightly dull knives or tools. Restores to a fine edge any knife or tool that is slightly dull. Many of our customers consider the fine grit to be a medium/all purpose sharpener. Professional Chefs and gourmet cooks work through to our finer grit models. For woodworkers and sportsman who are stepping through the grits, it's the edge refinement step done before micro beveling and polishing. Size: 25 micron (600 mesh). Color code: red.

● **Extra Fine** | Gives everything a polished and razor sharp edge. Refines knife or tool edge to razor sharp perfection. Size: 9 micron (1200 mesh). Color code: green.

● **Extra Extra Fine** | For the edge enthusiast who wants the ultimate edge. Provides the finest grade micronized bonded diamond abrasive available anywhere for the ultimate edge refinement, achieving quick stock removal with millions of diamond cutting edges. Prior to break-in, using the extra-extra fine diamond will result in a matte to shiny finish (scratch pattern evident) on your edge or bevel; once fully broken in, you will achieve a lustrous finished edge. Size: 3 micron (8000 mesh). Color code: tan.

BENCH STONES provide high-performance sharpening with precision-flat interrupted and continuous surfaces in a broad range of grits and sizes. DMT® bench stone models include Diamond Whetstone™, Dia-Sharp® and DuoSharp® brand sharpeners.

A Diamond Whetstone™ Models

Featuring the signature polka-dot pattern innovated by DMT®, Diamond Whetstone™ sharpeners are often imitated in appearance, but never equalled in quality or performance. The interrupted surface of tiny wells trap metal debris to ensure clean, continuous edge contact while the superior diamond does its work. For the quickest, cleanest sharpening, there truly is no substitute. Offered in 2 sizes and 4 grits with an attractive hardwood box or optional plastic case on 6-inch models.

MODEL NUMBER	SHARPENER SIZE inches (millimeters)	DIAMOND GRIT X=extra, XX=extra-extra	SPECIAL FEATURES (see text for full description)	
W6X	6 x 2 (152 x 51)	X-Coarse	Hardwood box	A
W6C	6 x 2 (152 x 51)	Coarse	Hardwood box	A
W6F	6 x 2 (152 x 51)	Fine	Hardwood box	A
W6E	6 x 2 (152 x 51)	X-Fine	Hardwood box	A
W6XP	6 x 2 (152 x 51)	X-Coarse	Plastic case (not shown)	A
W6CP	6 x 2 (152 x 51)	Coarse	Plastic case (not shown)	A
W6FP	6 x 2 (152 x 51)	Fine	Plastic case (not shown)	A
W6EP	6 x 2 (152 x 51)	X-Fine	Plastic case (not shown)	A
W8X	8 x 2.625 (203 x 67)	X-Coarse	Hardwood box	A
W8C	8 x 2.625 (203 x 67)	Coarse	Hardwood box	A
W8F	8 x 2.625 (203 x 67)	Fine	Hardwood box	A
W8E	8 x 2.625 (203 x 67)	X-Fine	Hardwood box	A

◀ Choose from 3 types of bench stones: (left to right) Diamond Whetstone™, Dia-Sharp® and DuoSharp®

B DuoSharp® Models

Innovative, multi-patented and engineered to be precision-flat, DuoSharp® sharpeners use two interrupted surfaces of superior diamond to provide two-stage sharpening with fast, clean and consistent results every time. Available in 2 sizes and 4 grit combinations, all models come with a base or non-skid mat.

C DuoSharp®plus™ Models

These sharpeners have all the features of our DuoSharp® line, plus a continuous zone of diamond abrasive for small and pointed tools. Offered in 4 grit combinations, each includes a base or non-skid mat.

MODEL NUMBER	SHARPENER SIZE inches (millimeters)	DIAMOND GRIT X=extra, XX=extra-extra	SPECIAL FEATURES (see text for full description)	
W8CXNB	8 x 2.625 (203 x 67)	Coarse / X-Coarse	2 sides/grits, Mat	B
W8FCNB	8 x 2.625 (203 x 67)	Fine / Coarse	2 sides/grits, Mat	B
W8EFNB	8 x 2.625 (203 x 67)	X-Fine / Fine	2 sides/grits, Mat	B
W8ECNB	8 x 2.625 (203 x 67)	X-Fine / Coarse	2 sides/grits, Mat	B
W8CX-WB	8 x 2.625 (203 x 67)	Coarse / X-Coarse	2 sides/grits, Base	B
W8FC-WB	8 x 2.625 (203 x 67)	Fine / Coarse	2 sides/grits, Base	B
W8EF-WB	8 x 2.625 (203 x 67)	X-Fine / Fine	2 sides/grits, Base	B
W8EC-WB	8 x 2.625 (203 x 67)	X-Fine / Coarse	2 sides/grits, Base	B
WM8CX	8 x 2.625 (203 x 67)	Coarse / X-Coarse	2 sides/grits, Continuous zone, Mat	C
WM8FC	8 x 2.625 (203 x 67)	Fine / Coarse	2 sides/grits, Continuous zone, Mat	C
WM8EF	8 x 2.625 (203 x 67)	X-Fine / Fine	2 sides/grits, Continuous zone, Mat	C
WM8FC-WB	8 x 2.625 (203 x 67)	Fine / Coarse	2 sides/grits, Continuous zone, Base	C
WM8EF-WB	8 x 2.625 (203 x 67)	X-Fine / Fine	2 sides/grits, Continuous zone, Base	C
W250CXNB	10 x 4 (250 x 100)	Coarse / X-Coarse	2 sides/grits, Mat	B
W250FCNB	10 x 4 (250 x 100)	Fine / Coarse	2 sides/grits, Mat	B
W250EFNB	10 x 4 (250 x 100)	X-Fine / Fine	2 sides/grits, Mat	B
W250ECNB	10 x 4 (250 x 100)	X-Fine / Coarse	2 sides/grits, Mat	B
W250CX-WB	10 x 4 (250 x 100)	Coarse / X-Coarse	2 sides/grits, Base	B
W250FC-WB	10 x 4 (250 x 100)	Fine / Coarse	2 sides/grits, Base	B
W250EF-WB	10 x 4 (250 x 100)	X-Fine / Fine	2 sides/grits, Base	B
W250EC-WB	10 x 4 (250 x 100)	X-Fine / Coarse	2 sides/grits, Base	B

▲ DuoSharp® models are available with or without a base. See model numbers ending with "WB" to select a DuoSharp® with a base.

D Dia-Sharp® Bench Stones

For those who prefer a continuous diamond surface, especially for sharpening small or pointed tools, these bench stones outperform them all. Offered in 5 sizes and from 4 to 6 grits, all but double-sided models feature non-skid rubber feet.

E Dia-Sharp® MagnaBase™ Sharpening System

With a full 72 sq. inches of superior diamond, this 12" x 3" double-sided Dia-Sharp® sharpening system includes our DuoBase™ with MagnaBase™ Adapter to deliver the best in 2-stage sharpening. Offered in 2 grit combinations.

◀ Only DMT® offers you the same high-performance diamond coating on both interrupted and continuous sharpening surfaces. Choose from many models that feature the signature DMT® polka-dot pattern (left), or choose Dia-Sharp® (right) with full, continuous coverage.

MODEL NUMBER	SHARPENER SIZE inches (millimeters)	DIAMOND GRIT X=extra, XX=extra-extra	SPECIAL FEATURES (see text for full description)	
D11X	11.5 x 2.5 (292 x 64)	X-Coarse	Rubber feet	D
D11C	11.5 x 2.5 (292 x 64)	Coarse	Rubber feet	D
D11F	11.5 x 2.5 (292 x 64)	Fine	Rubber feet	D
D11E	11.5 x 2.5 (292 x 64)	X-Fine	Rubber feet	D
D10C	10 x 4 (254 x 102)	Coarse	Rubber feet	D
D10F	10 x 4 (254 x 102)	Fine	Rubber feet	D
D10E	10 x 4 (254 x 102)	X-Fine	Rubber feet	D
D8XX	8 x 3 (203 x 76)	XX-Coarse	Rubber feet	D
D8X	8 x 3 (203 x 76)	X-Coarse	Rubber feet	D
D8C	8 x 3 (203 x 76)	Coarse	Rubber feet	D
D8F	8 x 3 (203 x 76)	Fine	Rubber feet	D
D8E	8 x 3 (203 x 76)	X-Fine	Rubber feet	D
D8EE	8 x 3 (203 x 76)	XX-Fine	Rubber feet	D
D6X	6 x 2 (152 x 51)	X-Coarse	Rubber feet	D
D6C	6 x 2 (152 x 51)	Coarse	Rubber feet	D
D6F	6 x 2 (152 x 51)	Fine	Rubber feet	D
D6E	6 x 2 (152 x 51)	X-Fine	Rubber feet	D
D6CX	6 x 2 (152 x 51)	Coarse / X-Coarse	2 sides/grits	D
D6FC	6 x 2 (152 x 51)	Fine / Coarse	2 sides/grits	D
D6EF	6 x 2 (152 x 51)	X-Fine / Fine	2 sides/grits	D
D6FX	6 x 2 (152 x 51)	Fine / X-Coarse	2 sides/grits	D
D12CX-WB	12 x 3 (305 x 76)	Coarse / X-Coarse	2 sides/grits, MagnaBase™	E
D12EF-WB	12 x 3 (305 x 76)	X-Fine / Fine	2 sides/grits, MagnaBase™	E

▲ The Dia-Sharp® D12 comes with a base for added height. To add a base to any Dia-Sharp®, DuoSharp® or 6" x 2" Diamond Whetstone™, see Accessories chart on page 9.

F Diamond Wave™ Sharpener

The first to combine a convex and concave diamond surface in one, this uniquely designed, award-winning product affords longer, easier sharpening strokes over traditional slip stones. The juxtaposing pair of 1" to 1/16" tapered surfaces produce radii to accommodate a full set of curved edges. Available in 2 grits.

G Diamond Honing Cones

Tapered slip stones are great for honing tool and die sets as well as other curved edges like gouges and specialty instruments. The superior diamond grit of DMT® Diamond Honing Cones ensures faster results with less effort. Offered in 3 sizes, each cone can be purchased separately, or as a kit. (Kit models DCKF and TCKIT-F not pictured). See chart below for details.

ACCESSORIES

H Dia-Paste™ Compound: For achieving ultimate tool performance, there's no substitute for Dia-Paste™ diamond compound. Just a light application produces a polished, mirror finish that reduces friction and extends sharpness. Offered in 3 grits, syringes can be purchased individually or as a kit of 3.

I DiaSpray™ Diamond Suspension: For those who seek the utmost mirror finish, DiaSpray™ is a sprayable suspension with diamond. This allows the 0.5 micron grit to be easily applied to any stropping material. Available in 0.85 fl. oz. (25 ml) bottles.

J DuoBase™ and DuoBase™ with MagnaBase™ Adapter (K): Featuring no-skid rubber feet and ample height for knuckle clearance. Choose DuoBase™ for any DuoSharp® or 6" x 2" stone; or select DuoBase™ with MagnaBase™ Adapter for all Dia-Sharp™ models.

Non-Skid Mat: (not pictured) For use with any bench stone up to 10 inches in length, this mat offers a space-saving way to keep your stone in place.

MODEL NUMBER	LENGTH* inches (millimeters)	DIAMOND GRIT X=extra, XX=extra-extra	SPECIAL FEATURES (see text for full description)	
WAV-F	10 x 2.36 (254 x 60)	Fine	Curved surface, Mat	F
WAV-E	10 x 2.36 (254 x 60)	X-Fine	Curved surface, Mat	F
DCSFH	4 (102)	Fine	0.125 to 0.375" diameter cone	G
DCMF	6 (152)	Fine	0.375 to 0.75" dia. half-round cone	G
DCLF	8 (203)	Fine	0.75 to 1.25" dia. half-round cone	G
DCKF	(see above)	Fine	3 cones, Wood box (not shown)	
TCKIT-F	(see above)	Fine	3 cones, one D3, Pouch (not shown)	
DP6	–	6 Micron	2 gram syringe	H
DP3	–	3 Micron	2 gram syringe	H
DP1	–	1 Micron	2 gram syringe	H
DPK	–	1, 3, and 6 Micron	3 grit set, 2 gram syringes	
DSPRAY	–	0.5 Micron	0.85 ounce (25 ml) spray bottle	I
B8250	–	–	12" x 5" base, Rubber feet	J
B8250-MBA	–	–	12" x 5" magnetic base, Rubber feet	K
SR009	–	–	10" x 4" mat, Non-skid coating	

*All sharpener measurements exclude dimensions of handle

▲ The award-winning design of Diamond Wave™ makes it the most useful and versatile sharpener for a wide range of curved edges, such as gouges, chisels and more.

◀ Honing Cones can be purchased individually or as kit. See product listing for details.

▲ Add a base to your whetstone, or choose the DuoBase™ with MagnaBase™ Adapter (K) for use with any Dia-Sharp® bench stone.

FOLDING SHARPENERS put uncompromising diamond performance in a compact, portable design. Our best-selling Diafold® brand sharpeners can tackle almost any edge – straight, curved or serrated – and their butterfly design lets you fold, stow and go!

Ⓐ Double-Sided Diafold®

Our most popular, versatile and convenient general-purpose sharpener, the Double-Sided Diafold® delivers two-stage sharpening with compact convenience. Two Diamond Whetstone™ sharpeners are combined to create a lightweight sharpener for all sorts of edges, from knives to scissors to axes and more. Models are available in 4 grit combinations.

Ⓑ Single-Sided Diafold®

Featuring the adaptable Diamond Whetstone™ sharpener with signature polka-dot interrupted surface, Diafold® is truly a multi-use sharpener for the home, camper, tool box and gardening shed. Offered in 4 grits, this trusty tool stores small and performs big.

Also available in a grooved hook-and-knife model (Ⓒ) that allows anglers to sharpen fishhooks.



▲ Some Diafold® models feature a diamond grit coated groove to easily sharpen fishhooks

MODEL NUMBER	SHARPENER SIZE inches (millimeters)	DIAMOND GRIT X=extra, XX=extra-extra	SPECIAL FEATURES (see text for full description)	
FWCX	4.33 x 0.875 (110 x 22)	Coarse / X-Coarse	2 sides/grits	Ⓐ
FWFC	4.33 x 0.875 (110 x 22)	Fine / Coarse	2 sides/grits	Ⓐ
FWFE	4.33 x 0.875 (110 x 22)	X-Fine / Fine	2 sides/grits	Ⓐ
FWEE	4.33 x 0.875 (110 x 22)	X-Fine / XX-Fine	2 sides/grits	Ⓐ
FWX	4.33 x 0.875 (110 x 22)	X-Coarse		Ⓑ
FWC	4.33 x 0.875 (110 x 22)	Coarse		Ⓑ
FWF	4.33 x 0.875 (110 x 22)	Fine		Ⓑ
FWE	4.33 x 0.875 (110 x 22)	X-Fine		Ⓑ
FFHWC	4.33 x 0.875 (110 x 22)	Coarse	Hook sharpening groove	Ⓒ
FFHWF	4.33 x 0.875 (110 x 22)	Fine	Hook sharpening groove	Ⓒ

◀ All Diafold® models feature a butterfly folding design and clear handles for maximum portability and convenience

Ⓓ Diafold® Serrated Sharpener

Sharpening serrated knives is easy with a Diafold® diamond serrated sharpener. And better still, this foldable companion also serves triple duty as a portable mini-steel, gut hook sharpener and conical file. Available in 3 grits.

Ⓔ Diafold® Flat File Sharpener

This single-sided diamond flat file is perfect for confined, narrow applications in the home, shop or garden. And since it's a Diafold® folding sharpener, it stores away small for portable convenience. Offered in 2 grits.

Ⓕ Diafold® Chain Saw Sharpener

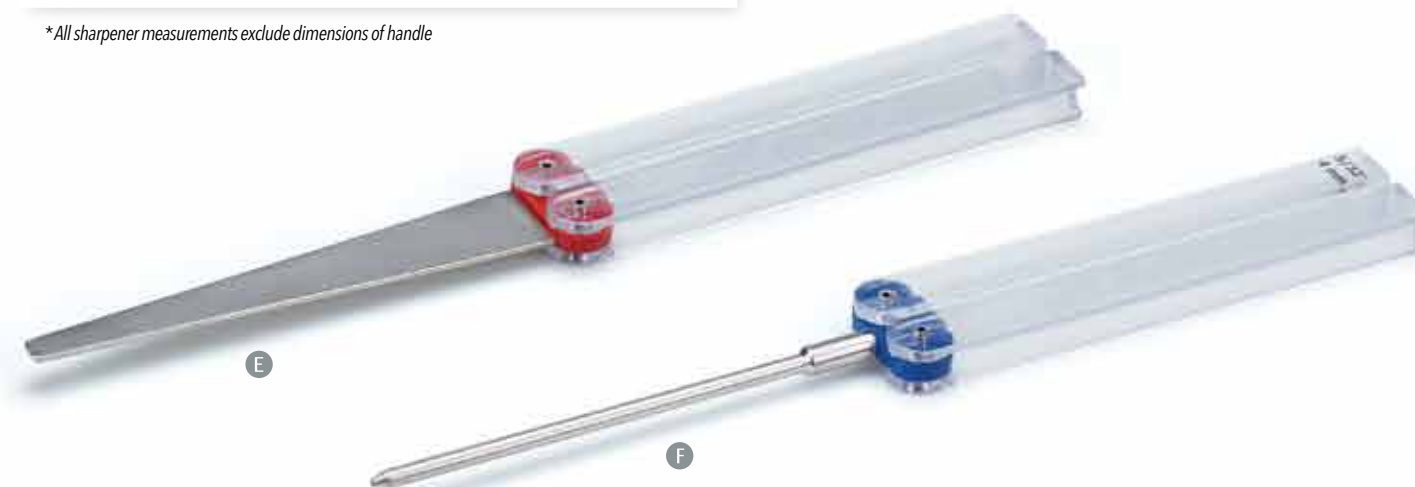
More than just a workhorse for everyday chain saw maintenance, it's a multi-use tool for getting into all those tight spots. Available in coarse grit and 3 diameters.

MODEL NUMBER	LENGTH* inches (millimeters)	DIAMOND GRIT X=extra, XX=extra-extra	SPECIAL FEATURES (see text for full description)	
FSKC	4.44 (113)	Coarse	0.25 to 0.0625" diameter taper	Ⓓ
FSKF	4.44 (113)	Fine	0.25 to 0.0625" diameter taper	Ⓓ
FSKE	4.44 (113)	X-Fine	0.25 to 0.0625" diameter taper	Ⓓ
FFC	4.44 (113)	Coarse	0.75 to 0.25" tapered file	Ⓔ
FFF	4.44 (113)	Fine	0.75 to 0.25" tapered file	Ⓔ
FCS5C	4.44 (113)	Coarse	5/32" diameter rod	Ⓕ
FCS6C	4.44 (113)	Coarse	6/32" diameter rod	Ⓕ
FCS7C	4.44 (113)	Coarse	7/32" diameter rod	Ⓕ

*All sharpener measurements exclude dimensions of handle



▲ The combination of high-performance diamond grit and the tapered Diafold® design makes serrated sharpening easy. Just match the serration against the corresponding taper of the sharpener, and make half-inch strokes with a simple twist of the wrist.



For more information and online product demonstration videos, visit www.dmtsharp.com

WWW.SWIFTTOOL.COM

INFO@SWIFTTOOL.COM

POCKET SHARPENERS deliver simplicity and utility for sharpening any time, anywhere. Available in both interrupted and continuous diamond surfaces, DMT® pocket models include Mini-Sharp®, Mini-Hone®, Diamond Whetstone™ and Dia-Sharp® brand sharpeners.

A Diamond Mini-Sharp® Models

The sharpener that travels with you, Diamond Mini-Sharp® features a folding handle to make it ultra portable, plus a swivel ring that attaches conveniently to a coat, backpack, or key chain. Offered in 4 grits.

Also available in a grooved model (B) that allows anglers to sharpen fishhooks. Offered in 2 grits.

C Mini Diamond Whetstone™ Models

A portable enhancement to any tool bag or glovebox, the 70mm stone delivers quick edge repair any time, anywhere. Available in 3 grits, individually or as a kit of 3.

D Diamond Whetstone™ Models

Surely the most distinguished tool to fit in your pocket, this handy 4" diamond sharpener comes in a handsome leather sheath. Offered in 5 grits, individually or as a kit of 4.

Some models also feature a continuous diamond zone (E) for sharpening pointed or narrow-edged tools. Available in 3 grits.

MODEL NUMBER	SHARPENER SIZE inches (millimeters)	DIAMOND GRIT X=extra, XX=extra-extra	SPECIAL FEATURES (see text for full description)	
F70X	2.76 x 0.98 (70 x 25)	X-Coarse	Swivel key ring	A
F70C	2.76 x 0.98 (70 x 25)	Coarse	Swivel key ring	A
F70F	2.76 x 0.98 (70 x 25)	Fine	Swivel key ring	A
F70E	2.76 x 0.98 (70 x 25)	X-Fine	Swivel key ring	A
FF70C	2.76 x 0.98 (70 x 25)	Coarse	Hook sharpening groove	B
FF70F	2.76 x 0.98 (70 x 25)	Fine	Hook sharpening groove	B
W7C	2.76 x 0.98 (70 x 25)	Coarse		C
W7F	2.76 x 0.98 (70 x 25)	Fine		C
W7E	2.76 x 0.98 (70 x 25)	X-Fine		C
W7EFC	2.76 x 0.98 (70 x 25)	X-Fine, Fine, Coarse	3 grit set	C
W4X	4.33 x 0.875 (110 x 22)	X-Coarse	Leather pouch	D
W4C	4.33 x 0.875 (110 x 22)	Coarse	Leather pouch	D
W4F	4.33 x 0.875 (110 x 22)	Fine	Leather pouch	D
W4E	4.33 x 0.875 (110 x 22)	X-Fine	Leather pouch	D
W4EE	4.33 x 0.875 (110 x 22)	XX-Fine	Leather pouch	D
W4K	4.33 x 0.875 (110 x 22)	X-Coarse, Coarse, Fine, X-Fine	4 grit set, Cont. zone, Fabric pouch	E
WMC	4.33 x 0.875 (110 x 22)	Coarse	Continuous zone, Leather pouch	E
WMF	4.33 x 0.875 (110 x 22)	Fine	Continuous zone, Leather pouch	E
WME	4.33 x 0.875 (110 x 22)	X-Fine	Continuous zone, Leather pouch	E

◀ *Diamond Angler Mini-Sharp® features a grooved edge to easily sharpen fishhooks.*

◀ *Some 4-inch Diamond Whetstone™ models feature a continuous diamond zone for added versatility.*

▼ *Mini-Sharp® folds away to just a few inches and the swivel ring keeps it handy for the road or trail.*

F Diamond Whetstone™ Ski Models

Pocket-sized for the slopes, our 4" ski sharpener is available in 4 grits and includes a water resistant pouch. Or lighter still, the 70mm Mini Diamond Whetstone™ (G) fits anywhere and comes in 4 grits, individually or in kits of 3.

H Dia-Sharp® Models

Perfect for small edges and pointed tools, this 4" continuous-surface stone works big in tight spots. Offered in 3 grits.

I Dia-Sharp® Credit Card Models

For on-the-go edge repair, this sharpener fits nicely in your wallet. Offered in 3 grits, and includes a vinyl carry sleeve.

J Dia-Sharp® Mini-Hone® Models

Suited for tight areas, these continuous-surface stones work well on everyday edges. Straight and offset models are available in 3 grits, individually or in kits of 3.

MODEL NUMBER	SHARPENER SIZE inches (millimeters)	DIAMOND GRIT X=extra, XX=extra-extra	SPECIAL FEATURES (see text for full description)	
WS4XX	4.33 x 0.875 (110 x 22)	XX-Coarse	Ski model	F
WS4X	4.33 x 0.875 (110 x 22)	X-Coarse	Ski model	F
WS4C	4.33 x 0.875 (110 x 22)	Coarse	Ski model	F
WS4F	4.33 x 0.875 (110 x 22)	Fine	Ski model	F
WS7XX	2.76 x 0.98 (70 x 25)	XX-Coarse	Ski model	G
WS7X	2.76 x 0.98 (70 x 25)	X-Coarse	Ski model	G
WS7C	2.76 x 0.98 (70 x 25)	Coarse	Ski model	G
WS7F	2.76 x 0.98 (70 x 25)	Fine	Ski model	G
WS7K	2.76 x 0.98 (70 x 25)	Fine, Coarse, X-Coarse	3 grit set, Ski model	G
WS7K2	2.76 x 0.98 (70 x 25)	XX-Coarse, X-Coarse, Coarse	3 grit set, Ski model	G
D4C	4 x 0.875 (102 x 22)	Coarse		H
D4F	4 x 0.875 (102 x 22)	Fine		H
D4E	4 x 0.875 (102 x 22)	X-Fine		H
D3C	3.25 x 2 (83 x 51)	Coarse	Vinyl sleeve	I
D3F	3.25 x 2 (83 x 51)	Fine	Vinyl sleeve	I
D3E	3.25 x 2 (83 x 51)	X-Fine	Vinyl sleeve	I
D2C	2.5 x 0.75 (63.5 x 19)	Coarse		I
D2F	2.5 x 0.75 (63.5 x 19)	Fine		I
D2E	2.5 x 0.75 (63.5 x 19)	X-Fine		I
D2K	2.5 x 0.75 (63.5 x 19)	X-Fine, Fine, Coarse	3 grit set	I
OD2C	2.5 x 0.75 (63.5 x 19)	Coarse	Offset handle	I
OD2F	2.5 x 0.75 (63.5 x 19)	Fine	Offset handle	I
OD2E	2.5 x 0.75 (63.5 x 19)	X-Fine	Offset handle	I
OD2K	2.5 x 0.75 (63.5 x 19)	X-Fine, Fine, Coarse	3 grit set, Offset handle	I



For more information and online product demonstration videos, visit www.dmtsharp.com

WWW.SWIFTTOOL.COM

INFO@SWIFTTOOL.COM

GUIDED SHARPENING SYSTEMS ensure proper edge care by providing consistent results without fail—even for beginners! Available in a wide range of grit combinations, DMT® offers two easy-to-use systems: the Aligner™ and Diafold® Magna-Guide® brand sharpening systems.

A Diafold® Magna-Guide® Kits

This portable, lightweight system consists of 3 elegantly integrated parts: the *Double-Sided Diafold® sharpener*, *Aligner™ blade guide* and *magnetic angle guide*. The *Double-Sided Diafold®* offers portable, 2-stage sharpening at its best, the *blade guide* provides 7-angle adjustability for just the right edge every time, and the *angle guide* joins them by way of its unique built-in magnet. Offered in kits of one or two double-sided sharpeners. The two-sharpener kit (shown left) comes with a rugged carry case.

B Magna-Guide® Components

For those who already own one or more *Double-Sided Diafold®* sharpeners and wish to make sharpening easy enough for any family member or coworker, DMT® offers the *Aligner™ blade guide* and *magnetic angle guide*. With these two simple components, there will never be another dull edge in your house, campsite or workshop.

Diafold® Magna-Guide® has three simple parts: a Double-Sided Diafold®, Aligner™ blade guide, and magnetic angle guide.

Portable, lightweight and easy to use, Diafold® Magna-Guide® lets you hone knives like a pro. Just clamp on the blade guide, choose a sharpening angle, and glide the sharpener along the blade while the angle guide does all the work to keep your angle true.

◀ *Turn any Diafold® sharpener into a guided sharpening system with just two easy-to-use components.*

MODEL NUMBER	SHARPENER SIZE inches (millimeters)	DIAMOND GRIT X=extra, XX=extra-extra	SPECIAL FEATURES (see text for full description)	
MAGKIT-4	4.33 x 0.875 (110 x 22)	XX-Fine/X-Fine/Fine/Coarse	4 grit set (2 double-sided), Case	A
MAGKIT-EF	4.33 x 0.875 (110 x 22)	X-Fine / Fine	2 grit set (1 double-sided model)	
MGUIDE	—	—	No-scratch clamp, Angle guide	B

C Aligner™ Easy Edge-Guided Sharpening Kits

Our flagship product for guided sharpening, the *Aligner™* provides all the right components to ensure consistent angles, precise edge bevels, and expert sharpening strokes. Carefully designed for the ultimate in fast, faultless knife sharpening, each *Aligner™* kit includes one *stone holder*, one *blade guide* and a combination of grits and accessories. See chart below for details of each kit. (A-PROKIT with rugged carry case shown right.)

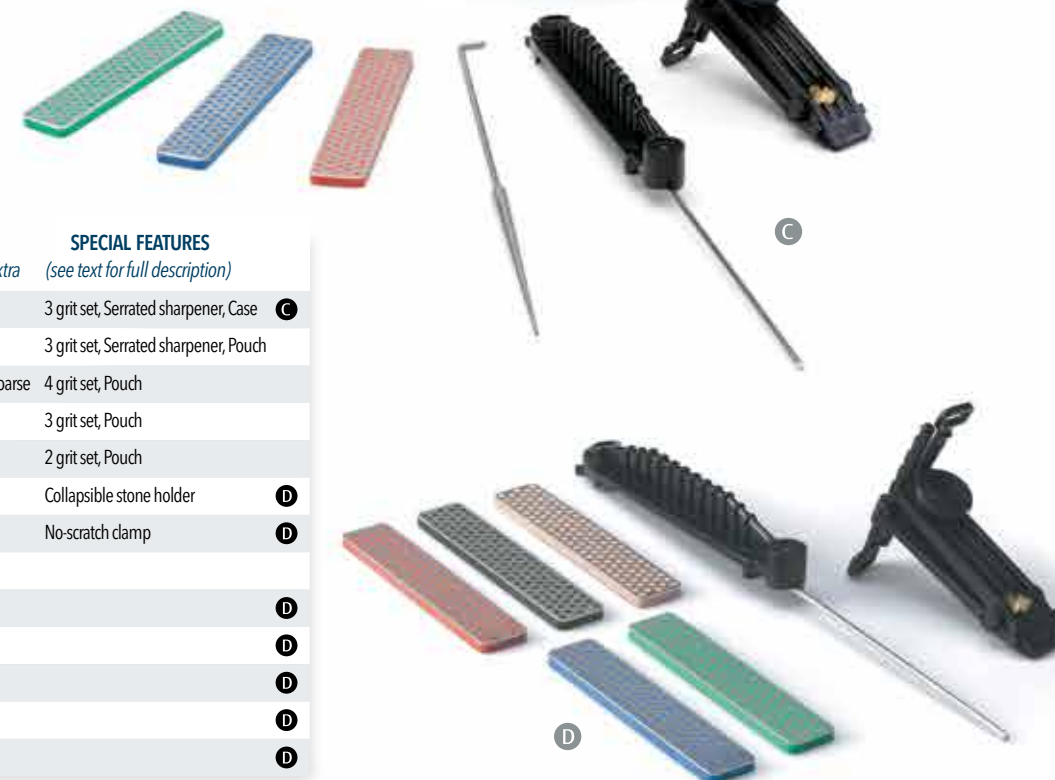
D Aligner™ Components

For those who already own one or more 4" *Diamond Whetstone™* sharpeners or otherwise wish to expand the versatility of their *Aligner™* kit, DMT® offers individual components and accessories. In addition to the *Aligner™ blade guide* and *stone holder*, six grits are available, ranging from extra-extra fine to extra-extra coarse.

MODEL NUMBER	SHARPENER SIZE inches (millimeters)	DIAMOND GRIT X=extra, XX=extra-extra	SPECIAL FEATURES (see text for full description)	
A-PROKIT	4.33 x 0.875 (110 x 22)	X-Fine, Fine, Coarse	3 grit set, Serrated sharpener, Case	C
ADELUXE	4.33 x 0.875 (110 x 22)	X-Fine, Fine, Coarse	3 grit set, Serrated sharpener, Pouch	
AKEFCX	4.33 x 0.875 (110 x 22)	X-Fine, Fine, Coarse, X-Coarse	4 grit set, Pouch	
AKEFC	4.33 x 0.875 (110 x 22)	X-Fine, Fine, Coarse	3 grit set, Pouch	
AKFC	4.33 x 0.875 (110 x 22)	Fine, Coarse	2 grit set, Pouch	
AHF	4.33 x 0.875 (110 x 22)	Fine	Collapsible stone holder	D
ABG	—	—	No-scratch clamp	D
A4XX	4.33 x 0.875 (110 x 22)	XX-Coarse		
A4X	4.33 x 0.875 (110 x 22)	X-Coarse		D
A4C	4.33 x 0.875 (110 x 22)	Coarse		D
A4F	4.33 x 0.875 (110 x 22)	Fine		D
A4E	4.33 x 0.875 (110 x 22)	X-Fine		D
A4EE	4.33 x 0.875 (110 x 22)	XX-Fine		D



The Aligner™ is comfortable to grip and easy to use. Just cradle the stone holder in your hand and glide your edge across the stone. Lefty or righty, it works the same for both sides of the blade—just flip it and repeat!



SHARPENING STEELS work well to hone, align and extend the utility of knife edges. More than just a steel, Diamond Steel™ sharpeners feature a high-performance diamond surface that can truly sharpen a dulled knife to its peak condition.



A Diamond Steel™

Providing more than just the realigning function of a traditional butcher steel, the Diamond Steel™ utilizes a fast-honing diamond surface to quickly and conveniently produce sharper results. Each rod features a sanitary, single-piece plastic handle with hand guard and a color-coded ring for easy grit identification. Offered in 3 sizes and 2 grits.

B Ceramic Steel

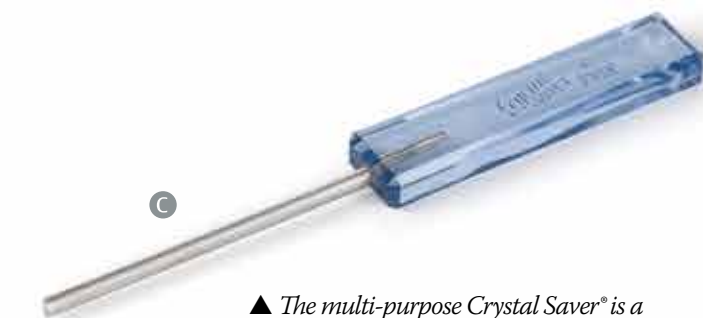
Through a patented process, the DMT® Ceramic Steel combines the fine abrasiveness of ceramic with lightweight aluminum to deliver a shatterproof, wear-resistant tool that provides the finest polished edge achievable by a bonded abrasive. With every convenience of a traditional butcher steel, this professional-grade product also features a sanitary, single-piece plastic handle with hand guard.



▲ All DMT® steels feature a sanitary, single-piece molded handle with 4-lobed guard for protection while in use and no-roll stability when rested on a countertop or prep surface.

C Crystal Saver® Multi-Purpose Sharpener

Its name is Crystal Saver®, but it does so much more than repair chipped crystal, glass and stoneware. This handy tool features a half-round diamond surface coarse enough to bring back the edge to almost anything in your kitchen drawer. For uncompromising results on small knives, use it in 2-stage sharpening along with a Diamond Steel™ or other fine-grit DMT® sharpener.



▲ The multi-purpose Crystal Saver® is a coarse-grit sharpener that can really save the day when mishaps occur. Designed to repair delicate crystal, this little hero works just as well on a dull paring knife.

MODEL NUMBER	SHARPENER SIZE inches (millimeters)	DIAMOND GRIT X=extra, XX=extra-extra	SPECIAL FEATURES (see text for full description)	
DS4F	14 x 0.375 (356 x 10)	Fine	Safety guard, Hang ring	A
DS2F	12 x 0.375 (305 x 10)	Fine	Safety guard, Hang ring	A
DS2E	12 x 0.375 (305 x 10)	X-Fine	Safety guard, Hang ring	
DS0F	10 x 0.375 (254 x 10)	Fine	Safety guard, Hang ring	A
CS2	12 x 0.5 (305 x 13)	n/a*	Ceramic, Safety guard, Hang ring	B
COO	Length: 4.25 (108)	Coarse	Half-round multi-purpose rod	C

* Ceramic steels carry a 7 micron (2200 mesh) abrasive that contains no diamond grit.

STONE CARE is an often overlooked yet critical part of proper edge care. While DMT® diamond sharpeners hold their flatness over continued use, traditional stones such as waterstones, oilstones and Arkansas stones need regular flattening to perform properly. Dia-Flat® brand lapping plates utilize proprietary DMT® Diamond Hardcoat Technology™ and have extreme flatness to be effective on all types of traditional stones, large or small.



▲ Dia-Flat® with DMT® Diamond Hardcoat Technology™ outlasts any other diamond coating on the market.

Dia-Flat® Lapping Plate

The undisputed heavyweight champion above all other bonded abrasive products, this extraordinary tool is unmatched for bringing flatness back to any conventional waterstone, oilstone or Arkansas stone. No other product or method performs the job in less time or with less effort because only Dia-Flat® features the revolutionary new DMT® Diamond Hardcoat Technology™ surface with the option of either 120- or 95-micron diamond grit.

Manufactured to outlast any other diamond coated product on the market, each Dia-Flat® Lapping Plate is precision-ground to carry a consistent, even coating of micronized monocrystalline diamond, then hand-certified to prove flat to less than ± 0.0005 inches. The ample surface area of 40 square inches allows easy flattening of both large and small stones.

MODEL NUMBER	SIZE inches (millimeters)	DIAMOND GRIT	SPECIAL FEATURES (see text for full description)
DIAFLAT	10 x 4 (254 x 102)	120 Micron	hand certified flat to $< \pm 0.0005$ "
DIAFLAT-95	10 x 4 (254 x 102)	95 Micron	hand certified flat to $< \pm 0.0005$ "



▲ Manufactured to exacting tolerance, Dia-Flat® Lapping Plates are hand certified, so each product arrives with its own certificate verifying absolute flatness to a variance of $< \pm 0.0005$ inches.

SHARPENERS WITH DIAMOND HARDCOAT™ SURFACE *are strong enough to stand up to years of sharpening the hardest edges. The DMT® HardCoat™ (HC) Surface will keep any edge razor-sharp, making them especially suited for the rigors of sharpening ceramic knives. Available in 3 of our most popular models: DuoSharp®, Diamond Steel™, and Diafold®.*



A DuoSharp® HC™

Innovative, multi-patented, and precision-flat, DuoSharp® HC sharpeners make use of two interrupted surfaces of superior diamond HardCoat™ to provide two-stage sharpening with fast, clean and consistent results every time. Features fine and extra-fine grits, plus the handy DuoBase™ for improved ergonomics.



B Diamond Steel™ HC™

Providing more than just the realigning function of a traditional steel, the Diamond Steel HC™ features our HardCoat™ diamond surface to provide fast and sharp results...even on hard ceramic knives. The 12-inch, fine-grit rod is set into a single-piece, generous and substantial hand guard with a color-coded ring for easy grit identification.



C Double-Sided Diafold® HC™

By combining the Hardcoat™ surface with our most popular, versatile and convenient double-sided sharpener, you get portable two-stage sharpening for not just steel but ceramic edges as well. The fine and extra-fine Diamond Whetstone™ surfaces also feature a continuous zone for use on pointed tools.



◀ The Diafold® HC sharpener features a continuous diamond zone for added versatility.

HARDCOAT DIAMOND GRITS

Diaflat® HardCoat | Designed to withstand flattening many styles of bench stones. Sizes: 120 micron (120 mesh), and 95 micron (160 mesh).

Fine | Stands up to the rigors of ceramic knife sharpening and puts a great edge on slightly dull edge. Size: 25 micron (600 mesh). Code: Red or marked FINE.

Extra Fine | Stands up to the rigors of ceramic knife sharpening and provides a razor sharp edge. Size: 9 micron (1200 mesh). Code: Green or marked X-FINE.

MODEL NUMBER	SHARPENER SIZE inches (millimeters)	DIAMOND GRIT X=extra, XX=extra-extra	SPECIAL FEATURES (see text for full description)	
W8EF-H-WB	8 x 2.625 (203 x 67)	X-Fine / Fine	HardCoat, 2 sides/grits, Base	A
DS2F-H	12 x 0.375 (305 x 10)	Fine	HardCoat, Safety guard, Hang ring	B
FWMEF-H	4.33 x 0.875 (110 x 22)	X-Fine / Fine	HardCoat, 2 sides/grits	C



Diamond Machining Technology

85 Hayes Memorial Drive, Marlborough, MA 01752

tel: 800.666.4368 or 508.481.5944 | fax: 508.485.3924

email: DMTCustomerCare@acmeunited.com | www.dmtsharp.com

DMT is a division of Acme United Corporation